

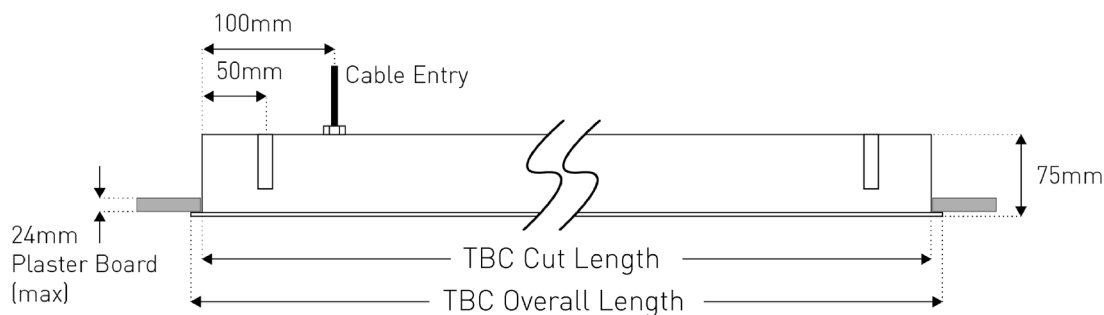
# ORLINE RC

## Installation Instructions

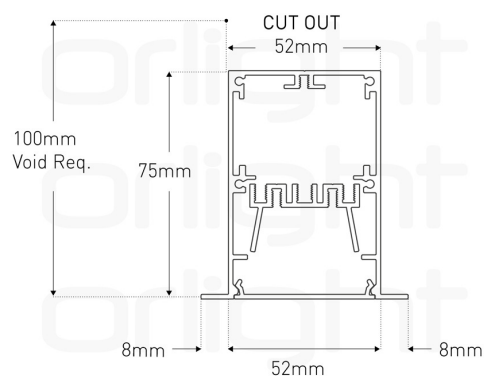
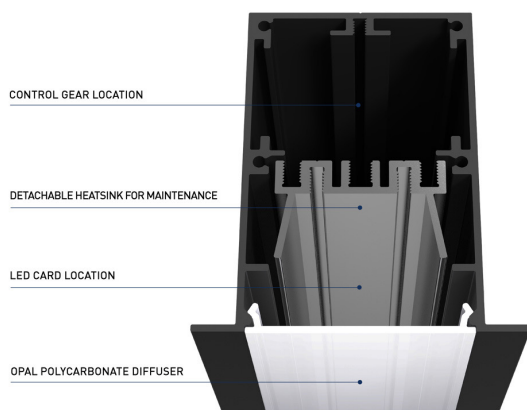
### 1. Product Information

Orline Recessed is constructed with a tongue and groove locking mechanism to enable seamless connection between multiple lengths.

Designs can provide isolated individually spaced modules, continuous lines of light or custom shaped configurations for feature lighting. Featuring an integral tridonic control gear, multiple power outputs and CRI>80 ensures light quality.



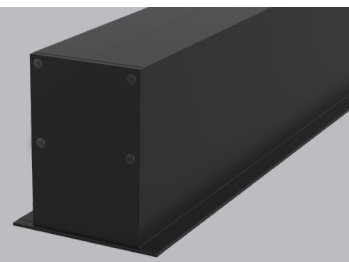
### 2. Fixing Details



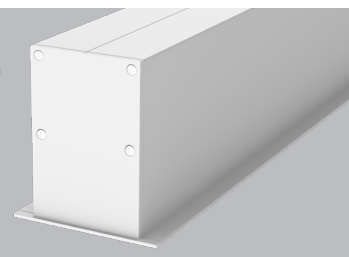
### 2. Fixing Details Continued



Black  
(RAL9005)



White  
(RAL9016)



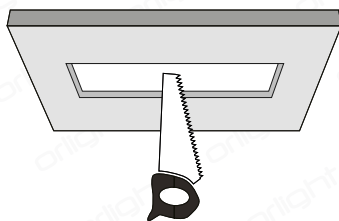
### 3. Instructions

This product must be installed by a skilled or instructed person in accordance with the current edition of the IET Wiring Regulations BS 7671 "Requirements for Electrical Installations" and the Building Regulations, as may be applicable subject to the location and country of the installation.

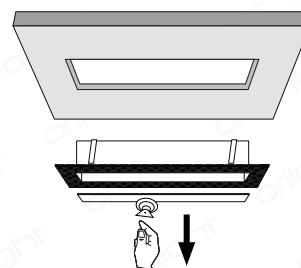
Disconnect the mains supply before installation. Ensure that the unit is installed and maintained by a certified professional and that installation conforms to any local building control standard applicable.

All information contained within these installation instructions manual is provided in good faith. Orlight shall not be held responsible for any losses incurred as a result of the Customer's failure to follow the instructions manual thoroughly and in its entirety or failing to inspect the product for missing parts and/or ant defects prior to installation.

1. Mark surface area and create desired cut-out.

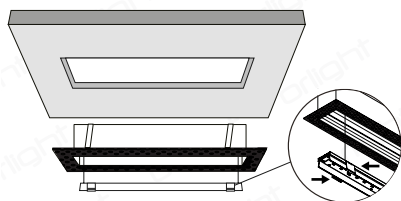


2. Remove diffuser using a sucker pad.

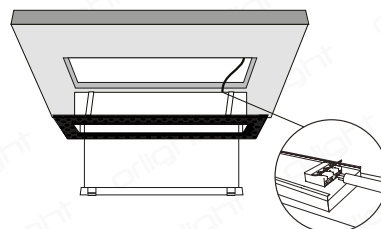


3. Instructions

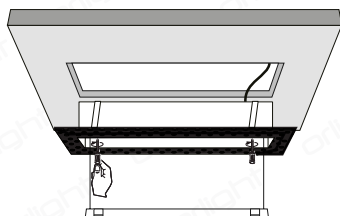
3. Squeeze both gear tray clips to release gear tray.



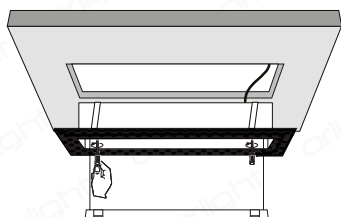
4. Feed mains supply through cable entry and connect to the terminal block.



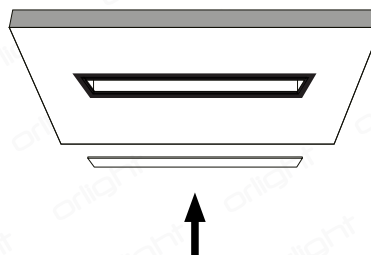
5. Insert fitting into cut-out. Affix to the appropriate position by tightening bracket screws from the inside of the fitting.



6. Inspect fitting, connections and all contacts.



7. Re-attach diffuser and peel protective film off.



8. If two sections require connecting, using internal joining clips, feed the loop around the fixing ring (A) and push down on the lever (B) to lock securely.

Once connected, continue from step (2).

